

PART OF N.W. 1/4 OF SEC. 13 T.5N., R.2W., S.L.B. & M.
THE HILLSITE ADDITION

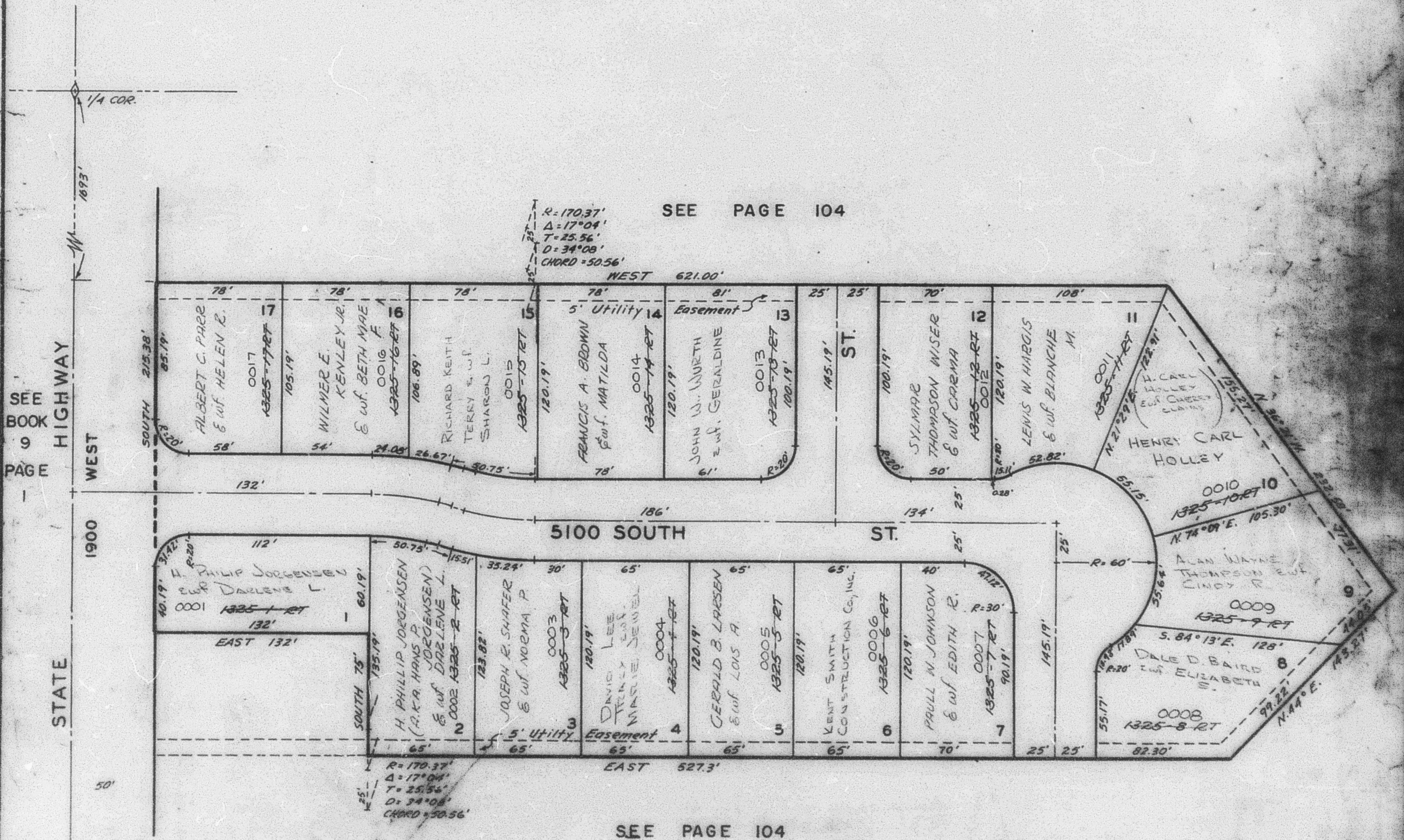
TAXING UNIT: 41

IN ROY CITY

PREFIX: 08-105

SCALE: 1" = 50'

NORTH DAVIS COUNTY SEWER DISTRICT



SEE PAGE 104

SEE PAGE 104

SEE BOOK 9 PAGE 1

STATE HIGHWAY WEST